

\$460,000 - 3879 Robins Crescent, Edmonton

MLS® #E4455194

\$460,000

3 Bedroom, 2.50 Bathroom, 1,557 sqft
Single Family on 0.00 Acres

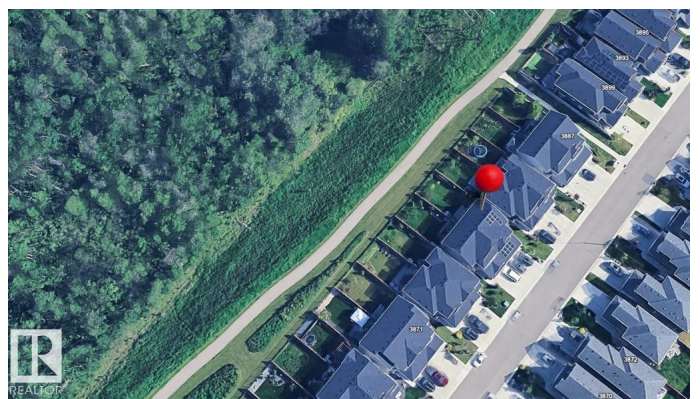
Starling, Edmonton, AB

STARLING / GREENSPACE VIEW / MODERN 3 BED 2.5 BATH – A RARE FIND: Welcome to 3879 Robins Crescent NW in sought-after Starling! This stunning 2019-built 3 bed, 2.5 bath half-duplex offers an open-concept layout, oversized double attached garage, and rare unobstructed views of green space and trails – no rear neighbours! The home features modern finishes, including whitewashed vinyl plank flooring, quartz countertops, tiled backsplashes, and energy-efficient solar panels. The fully landscaped yard and spacious deck make outdoor living a dream. Enjoy a bright, neutral interior palette with room to expand in the unfinished basement. Located steps from parks, trails, and future development, this home offers access to St. Albert amenities without the taxes. Stylish, move-in ready, and perfectly located – homes with this kind of view don't come up often! (Note: some photos digitally staged/edited)

Built in 2018

Essential Information

MLS® #	E4455194
Price	\$460,000
Bedrooms	3
Bathrooms	2.50



Full Baths	2
Half Baths	1
Square Footage	1,557
Acres	0.00
Year Built	2018
Type	Single Family
Sub-Type	Half Duplex
Style	2 Storey
Status	Active

Community Information

Address	3879 Robins Crescent
Area	Edmonton
Subdivision	Starling
City	Edmonton
County	ALBERTA
Province	AB
Postal Code	T5S 0M8

Amenities

Amenities	Closet Organizers, Hot Water Instant, No Smoking Home, Smart/Program. Thermostat, Heat Exchanger, Solar Equipment
Parking Spaces	4
Parking	Double Garage Attached
Is Waterfront	Yes

Interior

Interior Features	ensuite bathroom
Appliances	Dishwasher-Built-In, Dryer, Garage Opener, Microwave Hood Fan, Refrigerator, Stove-Electric, Washer, Window Coverings
Heating	Forced Air-1, Natural Gas
Fireplace	Yes
Fireplaces	Tile Surround
Stories	2
Has Basement	Yes
Basement	Full, Unfinished

Exterior

Exterior	Wood, Stone, Vinyl
----------	--------------------

Exterior Features	Backs Onto Lake, Backs Onto Park/Trees, Fenced, Flat Site, Golf Nearby, No Back Lane, Park/Reserve, Playground Nearby, Ravine View, River Valley View, River View, Rolling Land, Schools, Shopping Nearby, View Lake
Roof	Asphalt Shingles
Construction	Wood, Stone, Vinyl
Foundation	Concrete Perimeter

Additional Information

Date Listed	August 28th, 2025
Days on Market	11
Zoning	Zone 59

DATA IS DEEMED RELIABLE BUT IS NOT GUARANTEED ACCURATE BY THE REALTORS® ASSOCIATION OF EDMONTON. COPYRIGHT 2025 BY THE REALTORS® ASSOCIATION OF EDMONTON. ALL RIGHTS RESERVED. Trademarks are owned or controlled by the Canadian Real Estate Association (CREA) and identify real estate professionals who are members of CREA (REALTOR®, REALTORS®) and/or the quality of services they provide (MLS®, Multiple Listing Service®)

Listing information last updated on September 8th, 2025 at 7:47am MDT