

Courtesy Of Christina A Reid Of Century 21 Leading

\$509,547 - 507 Paterson Way, Edmonton

MLS® #E4454767

\$509,547

3 Bedroom, 2.50 Bathroom, 1,748 sqft

Single Family on 0.00 Acres

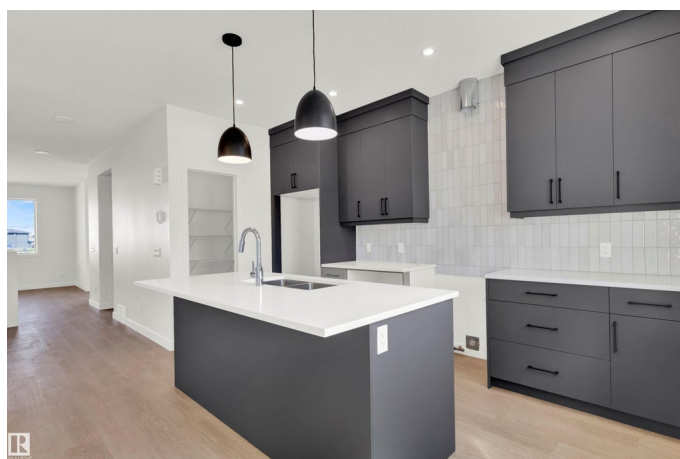
Paisley, Edmonton, AB

FREE 20X20 GARAGE FOR A LIMITED TIME PROMOTION The Bristol home design offers 1748 sq. ft. of stylish and functional living in the desirable SW community of Paisley. Offering a SOUTH facing backyard, you'll enjoy the sun all afternoon long. On the main floor, we welcome you with 9ft ceilings, a cozy fireplace in the living room and upgraded spindle railing to replace the stubwall on the staircase. The kitchen has been thoughtfully designed to include a large walk in pantry, 3CM quartz, a chimney hoodfan, a double door fridge with internal ice/water, electric range, built in microwave and a dishwasher. Appliances can still be upgraded if you wish. The size of the dining room is perfect for those who love to host. The upper floor welcomes you with a spacious bonus room, laundry room and 3 large bedrooms. We've also included a beautiful glass shower in the primary ensuite. There is a SIDE ENTRY, perfect for future basement development.

Built in 2025

Essential Information

MLS® #	E4454767
Price	\$509,547
Bedrooms	3
Bathrooms	2.50



Full Baths	2
Half Baths	1
Square Footage	1,748
Acres	0.00
Year Built	2025
Type	Single Family
Sub-Type	Detached Single Family
Style	2 Storey
Status	Active

Community Information

Address	507 Paterson Way
Area	Edmonton
Subdivision	Paisley
City	Edmonton
County	ALBERTA
Province	AB
Postal Code	T6W 5V2

Amenities

Amenities	Carbon Monoxide Detectors, Ceiling 9 ft., Detectors Smoke, Smart/Program. Thermostat, HRV System, Natural Gas Stove Hookup
Parking	Double Garage Detached

Interior

Interior Features	ensuite bathroom
Appliances	Dishwasher-Built-In, Oven-Microwave, Refrigerator, Stove-Electric
Heating	Forced Air-1, Natural Gas
Fireplace	Yes
Fireplaces	Insert
Stories	2
Has Basement	Yes
Basement	Full, Unfinished

Exterior

Exterior	Wood, Vinyl
Exterior Features	Airport Nearby, Back Lane, Golf Nearby, Partially Landscaped, Public Transportation, Schools, Shopping Nearby
Roof	Asphalt Shingles

Construction	Wood, Vinyl
Foundation	Concrete Perimeter

School Information

Elementary	STEINHAUER K-6
Middle	Joan Carr K-9
High	DR. ANNE ANDERSON

Additional Information

Date Listed	August 26th, 2025
Days on Market	1
Zoning	Zone 55

DATA IS DEEMED RELIABLE BUT IS NOT GUARANTEED ACCURATE BY THE REALTORS® ASSOCIATION OF EDMONTON. COPYRIGHT 2025 BY THE REALTORS® ASSOCIATION OF EDMONTON. ALL RIGHTS RESERVED.Trademarks are owned or controlled by the Canadian Real Estate Association (CREA) and identify real estate professionals who are members of CREA (REALTOR®, REALTORS®) and/or the quality of services they provide (MLS®, Multiple Listing Service®)

Listing information last updated on August 27th, 2025 at 2:47pm MDT