

Courtesy Of Bernie A Fitterer Of MaxWell Polaris

## \$225,000 - N/A, Edmonton

MLS® #E4453438

**\$225,000**

3 Bedroom, 1.50 Bathroom, 1,044 sqft

Condo / Townhouse on 0.00 Acres

Steinhauer, Edmonton, AB

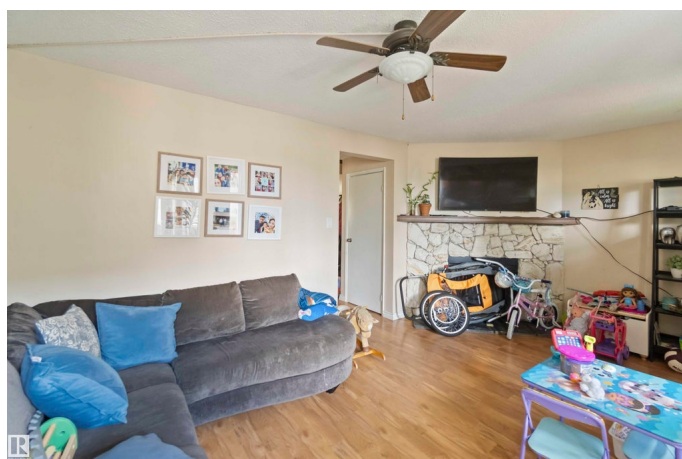
Discover this inviting 3-bed, 2-storey townhome in Commonwealth Village, Steinhauer, perfect for first-time buyers, families, or investors ready to add their personal touch. Steps from Steinhauer Park's playground, sports fields, and outdoor rink, it's ideal for active lifestyles. Enjoy proximity to Steinhauer Elementary, Southgate Centre's 165+ stores, and Century Park LRT for seamless downtown access. Ermineskin Community League offers vibrant events and fitness programs nearby. The cozy living room boasts laminate flooring, a corner fireplace with stone facing, and large windows overlooking the backyard. The eat-in kitchen features white cabinetry and appliances, ready for your modern upgrades. Upstairs, a spacious master, two bedrooms, and a 4-piece bath await. The partially finished basement, with ample storage and laundry, offers endless potential for customization. This end unit, next to a green belt, has a fenced backyard with deck and two parking stalls. Close to Calgary Trail and Anthony Henday

Built in 1978

### Essential Information

MLS® # E4453438

Price \$225,000



Bedrooms	3
Bathrooms	1.50
Full Baths	1
Half Baths	1
Square Footage	1,044
Acres	0.00
Year Built	1978
Type	Condo / Townhouse
Sub-Type	Townhouse
Style	2 Storey
Status	Active

### Community Information

Address	N/A
Area	Edmonton
Subdivision	Steinhauer
City	Edmonton
County	ALBERTA
Province	AB
Postal Code	T6J 4N4

### Amenities

Amenities	Detectors Smoke, Hot Water Natural Gas, Parking-Plug-Ins, Vinyl Windows
Parking	Stall

### Interior

Appliances	Dishwasher-Built-In, Dryer, Refrigerator, Stove-Electric, Washer
Heating	Forced Air-1, Natural Gas
Stories	2
Has Basement	Yes
Basement	Full, Partially Finished

### Exterior

Exterior	Wood
Exterior Features	Backs Onto Park/Trees, Fenced, Playground Nearby, Public Transportation
Roof	Asphalt Shingles
Construction	Wood

Foundation                      Concrete Perimeter

**Additional Information**

Date Listed                      August 17th, 2025  
Days on Market                1  
Zoning                              Zone 16  
Condo Fee                        \$356

DATA IS DEEMED RELIABLE BUT IS NOT GUARANTEED ACCURATE BY THE REALTORS® ASSOCIATION OF EDMONTON. COPYRIGHT 2025 BY THE REALTORS® ASSOCIATION OF EDMONTON. ALL RIGHTS RESERVED.Trademarks are owned or controlled by the Canadian Real Estate Association (CREA) and identify real estate professionals who are members of CREA (REALTOR®, REALTORS®) and/or the quality of services they provide (MLS®, Multiple Listing Service®)  
Listing information last updated on August 18th, 2025 at 10:32am MDT