

\$419,999 - 16714 111 Avenue, Edmonton

MLS® #E4439213

\$419,999

0 Bedroom, 0.00 Bathroom,
Industrial on 0.00 Acres

West Sheffield Industrial, Edmonton, AB

Move-in ready and full of potential! This clean and versatile 2,200± sq. ft. commercial condo is an incredible opportunity for businesses of all kinds—ideal for storage, light manufacturing, automotive repair or detailing, general contracting, breweries, or distilleries. Measuring 23'™ wide by 96'™ long, the unit features a rear bay door with convenient ground-level loading and includes a 100± sq. ft. mezzanine. With quick access to both Yellowhead Trail and Anthony Henday via 111th or 167th, this prime location keeps you connected. Opportunities like this don't last!

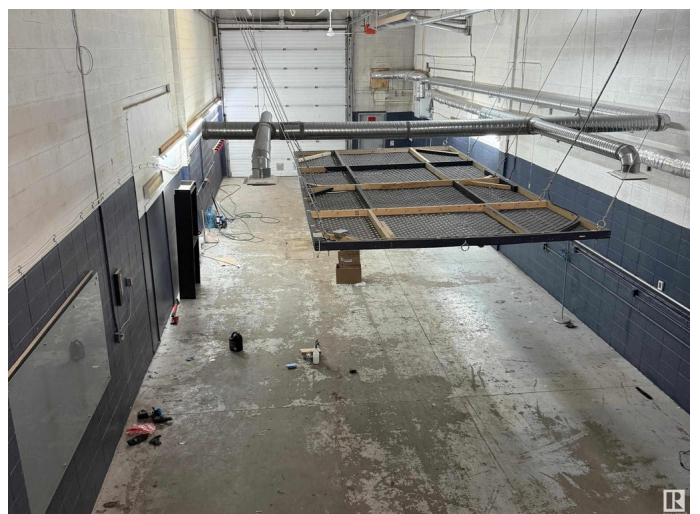
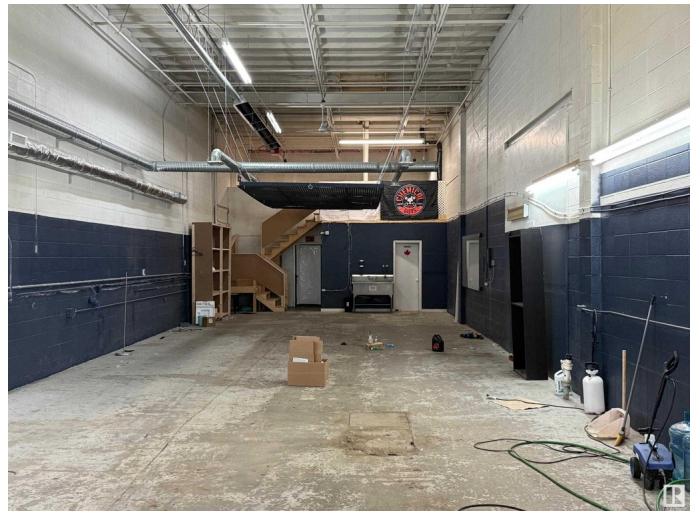
Built in 1969

Essential Information

MLS® #	E4439213
Price	\$419,999
Bathrooms	0.00
Acres	0.00
Year Built	1969
Type	Industrial
Status	Active

Community Information

Address	16714 111 Avenue
Area	Edmonton



Subdivision	West Sheffield Industrial
City	Edmonton
County	ALBERTA
Province	AB
Postal Code	T5M 2S5

Exterior

Exterior	Concrete
Construction	Concrete

Additional Information

Date Listed	May 29th, 2025
Days on Market	88
Zoning	Zone 40

DATA IS DEEMED RELIABLE BUT IS NOT GUARANTEED ACCURATE BY THE REALTORS® ASSOCIATION OF EDMONTON. COPYRIGHT 2025 BY THE REALTORS® ASSOCIATION OF EDMONTON. ALL RIGHTS RESERVED. Trademarks are owned or controlled by the Canadian Real Estate Association (CREA) and identify real estate professionals who are members of CREA (REALTOR®, REALTORS®) and/or the quality of services they provide (MLS®, Multiple Listing Service®)

Listing information last updated on August 25th, 2025 at 4:03pm MDT