

\$99,900 - 103 8310 Jasper Avenue, Edmonton

MLS® #E4435828

\$99,900

1 Bedroom, 1.00 Bathroom, 623 sqft

Condo / Townhouse on 0.00 Acres

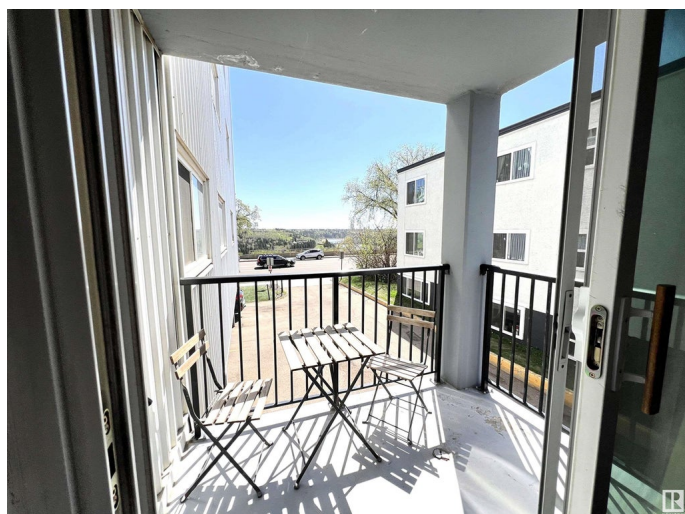
Cromdale, Edmonton, AB

Amazing Location and River Valley View from your 2nd floor balcony in the heart of Edmonton on Jasper Av just blocks from Ada Boulevard, Borden Park and the Stadium. This is perfect for a first time buyer, someone looking to downsize or as a very desirable rental just 7 minutes to the Ice District and Downtown in an area seeing major renewal and development. Many recent upgrades in this functional and open floor plan unit include paint, flooring and countertops. This is move in ready, well kept and fully furnished if the buyer wants! Quiet and well maintained building, all utilities included in fees, comfort and convenience in this ideal retreat. Don't miss the opportunity to own a home that offers location, views and lifestyle!

Built in 1968

Essential Information

| | |
|----------------|----------|
| MLS® # | E4435828 |
| Price | \$99,900 |
| Bedrooms | 1 |
| Bathrooms | 1.00 |
| Full Baths | 1 |
| Square Footage | 623 |
| Acres | 0.00 |
| Year Built | 1968 |



| | |
|----------|------------------------|
| Type | Condo / Townhouse |
| Sub-Type | Apartment High Rise |
| Style | Single Level Apartment |
| Status | Active |

Community Information

| | |
|-------------|------------------------|
| Address | 103 8310 Jasper Avenue |
| Area | Edmonton |
| Subdivision | Cromdale |
| City | Edmonton |
| County | ALBERTA |
| Province | AB |
| Postal Code | T5H 3S3 |

Amenities

| | |
|-----------|------------------------------------|
| Amenities | Parking-Plug-Ins, Storage-In-Suite |
| Parking | Stall |

Interior

| | |
|--------------|--|
| Appliances | Hood Fan, Oven-Microwave, Refrigerator, Stove-Electric |
| Heating | Baseboard, Hot Water, Natural Gas, Water |
| # of Stories | 8 |
| Stories | 1 |
| Has Basement | Yes |
| Basement | None, No Basement |

Exterior

| | |
|-------------------|--|
| Exterior | Concrete, Metal |
| Exterior Features | Back Lane, Golf Nearby, Public Transportation, River Valley View, River View, Shopping Nearby, See Remarks |
| Roof | See Remarks |
| Construction | Concrete, Metal |
| Foundation | Concrete Perimeter |

Additional Information

| | |
|----------------|----------------|
| Date Listed | May 10th, 2025 |
| Days on Market | 4 |
| Zoning | Zone 09 |
| Condo Fee | \$568 |

DATA IS DEEMED RELIABLE BUT IS NOT GUARANTEED ACCURATE BY THE REALTORS® ASSOCIATION OF EDMONTON. COPYRIGHT 2025 BY THE REALTORS® ASSOCIATION OF EDMONTON. ALL RIGHTS RESERVED.Trademarks are owned or controlled by the Canadian Real Estate Association (CREA) and identify real estate professionals who are members of CREA (REALTOR®, REALTORS®) and/or the quality of services they provide (MLS®, Multiple Listing Service®)

Listing information last updated on May 14th, 2025 at 3:17pm MDT