

## \$204,900 - 313 5810 Mullen Place, Edmonton

MLS® #E4434358

**\$204,900**

2 Bedroom, 2.00 Bathroom, 691 sqft

Condo / Townhouse on 0.00 Acres

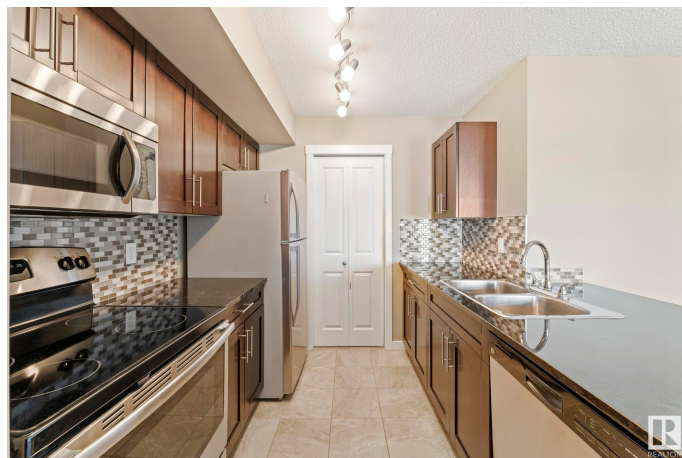
MacTaggart, Edmonton, AB

This apartment condo boasts significant upgrades compared to most units in the complex: ceramic tile flooring in the entry, kitchen & laundry; granite countertops & glass tile backsplash in kitchen & both bathrooms; stainless steel appliances; kitchen pantry; tile tub surround in the main bath; oversized walk-in shower in the ensuite; and full-sized stacked washer/dryer. The plush carpets are in immaculate condition and have been freshly shampooed for your comfort. With the large windows and light/neutral paint, the unit is bright & open. This unit features a NorthWest facing balcony that overlooks an empty lot, and a titled underground parking stall. The location can't be beat - within walking distance of Freson Bros, OEB Breakfast Co, Crumbl Cookies, Wave's Coffee House, Shopper's, as well as the trails of the Whitemud Creek Ravine. Right off the Henday & just a short drive to Terwillegar Rec Centre & Rabbit Hill Ski Area.

Built in 2016

### Essential Information

MLS® #	E4434358
Price	\$204,900
Bedrooms	2
Bathrooms	2.00



Full Baths	2
Square Footage	691
Acres	0.00
Year Built	2016
Type	Condo / Townhouse
Sub-Type	Lowrise Apartment
Style	Single Level Apartment
Status	Active

### Community Information

Address	313 5810 Mullen Place
Area	Edmonton
Subdivision	MacTaggart
City	Edmonton
County	ALBERTA
Province	AB
Postal Code	T6R 0W3

### Amenities

Amenities	No Animal Home, No Smoking Home, Parking-Visitor, Patio, Secured Parking, Security Door, Sprinkler System-Fire, Vinyl Windows
Parking Spaces	1
Parking	Underground

### Interior

Interior Features	ensuite bathroom
Appliances	Dishwasher-Built-In, Garage Control, Microwave Hood Fan, Refrigerator, Stacked Washer/Dryer, Stove-Electric, Window Coverings, TV Wall Mount
Heating	Baseboard, Hot Water, Natural Gas
# of Stories	4
Stories	4
Has Basement	Yes
Basement	None, No Basement

### Exterior

Exterior	Wood, Vinyl
Exterior Features	Airport Nearby, No Back Lane, No Through Road, Park/Reserve, Public Transportation, Schools, Shopping Nearby, Ski Hill Nearby

Roof	Asphalt Shingles
Construction	Wood, Vinyl
Foundation	Concrete Perimeter

**Additional Information**

Date Listed	May 3rd, 2025
Days on Market	9
Zoning	Zone 14
Condo Fee	\$336

DATA IS DEEMED RELIABLE BUT IS NOT GUARANTEED ACCURATE BY THE REALTORS® ASSOCIATION OF EDMONTON. COPYRIGHT 2025 BY THE REALTORS® ASSOCIATION OF EDMONTON. ALL RIGHTS RESERVED.Trademarks are owned or controlled by the Canadian Real Estate Association (CREA) and identify real estate professionals who are members of CREA (REALTOR®, REALTORS®) and/or the quality of services they provide (MLS®, Multiple Listing Service®)

Listing information last updated on May 12th, 2025 at 5:47am MDT