

\$165,000 - 112 7805 159 Street, Edmonton

MLS® #E4433332

\$165,000

3 Bedroom, 1.50 Bathroom, 1,119 sqft

Condo / Townhouse on 0.00 Acres

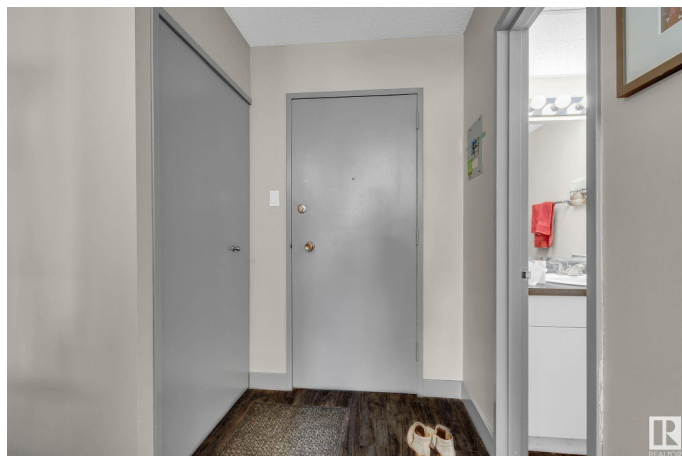
Patricia Heights, Edmonton, AB

Attention Investors! Welcome to Country Club Estates in prestigious Patricia Heights. This 2 story bright, large 3-bedroom, 1.5 bath corner unit is the perfect opportunity for savvy investors or first time home buyers. The main floor features a spacious living area with oversized windows, a sleek galley kitchen, dining space, guest bathroom, and access to a sunny private patio. Upstairs offers three generous bedrooms, a full bathroom, and a convenient storage room. This unit has been completely well maintained top to bottom. Located steps from off-leash parks and scenic river valley trails, with easy transit access to the University of Alberta, Downtown, Misericordia Hospital, and West Edmonton Mall. The complex is well-managed with major upgrades already completed, including new windows, patio doors, hallway carpet, siding, and roof.

Built in 1971

Essential Information

MLS® #	E4433332
Price	\$165,000
Bedrooms	3
Bathrooms	1.50
Full Baths	1
Half Baths	1



Square Footage	1,119
Acres	0.00
Year Built	1971
Type	Condo / Townhouse
Sub-Type	Lowrise Apartment
Style	2 Storey
Status	Active

Community Information

Address	112 7805 159 Street
Area	Edmonton
Subdivision	Patricia Heights
City	Edmonton
County	ALBERTA
Province	AB
Postal Code	T5R 2E1

Amenities

Amenities	Closet Organizers, Detectors Smoke, No Animal Home, No Smoking Home, Parking-Visitor, Patio, Vinyl Windows
Parking	Stall

Interior

Appliances	Dishwasher-Built-In, Refrigerator, Stove-Electric, Microwave Hood Fan-Two
Heating	Baseboard, Natural Gas
# of Stories	2
Stories	2
Has Basement	Yes
Basement	None, No Basement

Exterior

Exterior	Wood, Brick, Vinyl
Exterior Features	Corner Lot, Fenced, Public Transportation, Schools, Shopping Nearby
Roof	Tar & Gravel
Construction	Wood, Brick, Vinyl
Foundation	Concrete Perimeter

Additional Information

Date Listed	April 27th, 2025
Days on Market	3
Zoning	Zone 22
Condo Fee	\$613

DATA IS DEEMED RELIABLE BUT IS NOT GUARANTEED ACCURATE BY THE REALTORS® ASSOCIATION OF EDMONTON. COPYRIGHT 2025 BY THE REALTORS® ASSOCIATION OF EDMONTON. ALL RIGHTS RESERVED. Trademarks are owned or controlled by the Canadian Real Estate Association (CREA) and identify real estate professionals who are members of CREA (REALTOR®, REALTORS®) and/or the quality of services they provide (MLS®, Multiple Listing Service®)

Listing information last updated on April 30th, 2025 at 1:32pm MDT