

## \$493,988 - 229 Dunvegan Road, Edmonton

MLS® #E4432841

**\$493,988**

5 Bedroom, 3.00 Bathroom, 1,276 sqft

Single Family on 0.00 Acres

Athlone, Edmonton, AB

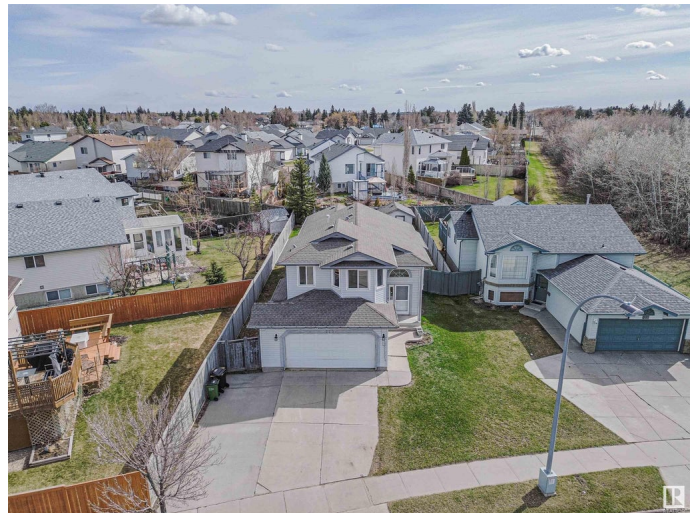
Ideal for a growing family, this 5 bedroom bilevel home in Athlone has 2173 sqft of living space and is sure to please! Youâ€™ll find 2 spacious bedrooms on the main level with a 4 piece bath. The upper level boasts the primary bedroom, a 4 piece ensuite and a walking closet. Also on the main floor is the spacious kitchen, dining and living area. Downstairs is the updated basement with 2 more bedrooms, a 3 piece bath and a spacious recreation area.

This home is west facing, looks onto a green space with a massive backyard and 2 tier deck to watch the kids play and entertain guests. Professionally cleaned, all bathroom vanities have been replaced as well as kitchen and dining floors. Close to transit, shopping and The Yellowhead. Come see for yourself!

Built in 2000

### Essential Information

|                |           |
|----------------|-----------|
| MLS® #         | E4432841  |
| Price          | \$493,988 |
| Bedrooms       | 5         |
| Bathrooms      | 3.00      |
| Full Baths     | 3         |
| Square Footage | 1,276     |
| Acres          | 0.00      |
| Year Built     | 2000      |



|          |                        |
|----------|------------------------|
| Type     | Single Family          |
| Sub-Type | Detached Single Family |
| Style    | Bi-Level               |
| Status   | Active                 |

### Community Information

|             |                   |
|-------------|-------------------|
| Address     | 229 Dunvegan Road |
| Area        | Edmonton          |
| Subdivision | Athlone           |
| City        | Edmonton          |
| County      | ALBERTA           |
| Province    | AB                |
| Postal Code | T5L 5C6           |

### Amenities

|                |  |
|----------------|--|
| Amenities      | Air Conditioner, Deck, Vaulted Ceiling |
| Parking Spaces | 4                                      |
| Parking        | Double Garage Attached                 |

### Interior

|                   |   |
|-------------------|---|
| Interior Features | ensuite bathroom  |
| Appliances        | Air Conditioning-Central, Dishwasher-Built-In, Dryer, Garage Opener, Microwave Hood Fan, Refrigerator, Storage Shed, Stove-Electric, Washer, Window Coverings |
| Heating           | Forced Air-1, Natural Gas   |
| Fireplace         | Yes   |
| Fireplaces        | Mantel  |
| Stories           | 3   |
| Has Basement      | Yes   |
| Basement          | Full, Finished  |

### Exterior

|                   |  |
|-------------------|--|
| Exterior          | Wood, Vinyl  |
| Exterior Features | Fenced, Landscaped, Playground Nearby, Public Transportation, Schools, Shopping Nearby |
| Roof              | Asphalt Shingles   |
| Construction      | Wood, Vinyl  |
| Foundation        | Concrete Perimeter   |

### Additional Information

Date Listed April 25th, 2025

Days on Market 18

Zoning Zone 01

DATA IS DEEMED RELIABLE BUT IS NOT GUARANTEED ACCURATE BY THE REALTORS® ASSOCIATION OF EDMONTON. COPYRIGHT 2025 BY THE REALTORS® ASSOCIATION OF EDMONTON. ALL RIGHTS RESERVED. Trademarks are owned or controlled by the Canadian Real Estate Association (CREA) and identify real estate professionals who are members of CREA (REALTOR®, REALTORS®) and/or the quality of services they provide (MLS®, Multiple Listing Service®)

Listing information last updated on May 13th, 2025 at 6:02am MDT