

\$499,900 - 22013 98a Avenue, Edmonton

MLS® #E4432425

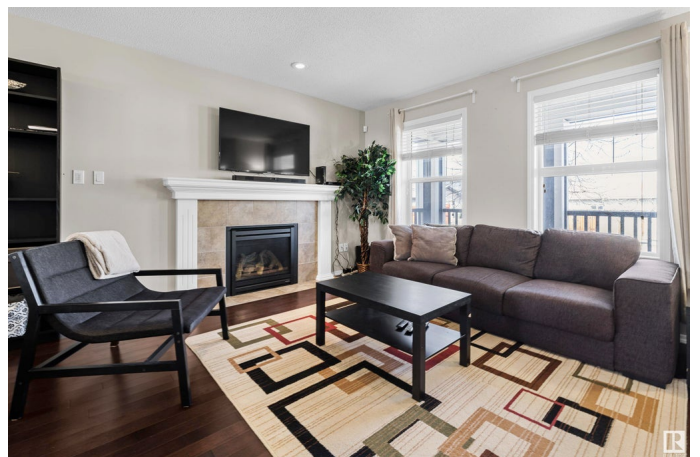
\$499,900

3 Bedroom, 3.50 Bathroom, 1,352 sqft

Single Family on 0.00 Acres

Secord, Edmonton, AB

Welcome to this lovely two storey home, situated on a quiet street in the family community of Secord. From the moment you walk in, you will fall in love with the spacious open concept+design! Upon entering the home, you are greeted by a lovely front entrance with a custom feature wall. The living room boasts dark hardwood floors, expansive front windows+a cozy gas fireplace. The kitchen has rich dark cabinets, quartz, stainless appliances, pantry, breakfast bar+a spacious dining area. The main floor is complete w/a 2pc powder room+back mud room. The second floor has a large primary bedroom w/walk-in closet+a 4pc ensuite. There are two more bedrooms+a 4pc bath. The newly finished basement offers a large family room, 4th bedroom, 3pc bath, laundry+ample storage. Enjoy the south facing backyard that feels like an oasis with the spacious over-sized deck. This home is complete w/a double garage + front veranda. Close to parks, schools, shopping, transit+a short drive to major freeways. Your search is over--move in+enjoy!



Built in 2013

Essential Information

MLS® # E4432425

Price \$499,900

Bedrooms	3
Bathrooms	3.50
Full Baths	3
Half Baths	1
Square Footage	1,352
Acres	0.00
Year Built	2013
Type	Single Family
Sub-Type	Detached Single Family
Style	2 Storey
Status	Active

Community Information

Address	22013 98a Avenue
Area	Edmonton
Subdivision	Secord
City	Edmonton
County	ALBERTA
Province	AB
Postal Code	T5T 4M3

Amenities

Amenities	On Street Parking, Deck, Front Porch, Vinyl Windows
Parking Spaces	2
Parking	Double Garage Detached

Interior

Interior Features	ensuite bathroom
Appliances	Dishwasher-Built-In, Dryer, Garage Control, Garage Opener, Microwave Hood Fan, Refrigerator, Stove-Electric, Washer, Window Coverings
Heating	Forced Air-1, Natural Gas
Fireplace	Yes
Fireplaces	Mantel
Stories	3
Has Basement	Yes
Basement	Full, Finished

Exterior

Exterior	Wood, Vinyl
----------	-------------

Exterior Features	Back Lane, Fenced, Golf Nearby, Landscaped, Park/Reserve, Paved Lane, Playground Nearby, Public Transportation, Schools, Shopping Nearby, See Remarks
Roof	Asphalt Shingles
Construction	Wood, Vinyl
Foundation	Concrete Perimeter

School Information

Elementary	David Thomas King School
Middle	David Thomas King School
High	Jasper Place School

Additional Information

Date Listed	April 24th, 2025
Days on Market	16
Zoning	Zone 58

DATA IS DEEMED RELIABLE BUT IS NOT GUARANTEED ACCURATE BY THE REALTORS® ASSOCIATION OF EDMONTON. COPYRIGHT 2025 BY THE REALTORS® ASSOCIATION OF EDMONTON. ALL RIGHTS RESERVED.Trademarks are owned or controlled by the Canadian Real Estate Association (CREA) and identify real estate professionals who are members of CREA (REALTOR®, REALTORS®) and/or the quality of services they provide (MLS®, Multiple Listing Service®)

Listing information last updated on May 9th, 2025 at 10:02pm MDT