

\$285,000 - 75 3380 28a Avenue, Edmonton

MLS® #E4432171

\$285,000

3 Bedroom, 2.50 Bathroom, 1,408 sqft
Condo / Townhouse on 0.00 Acres

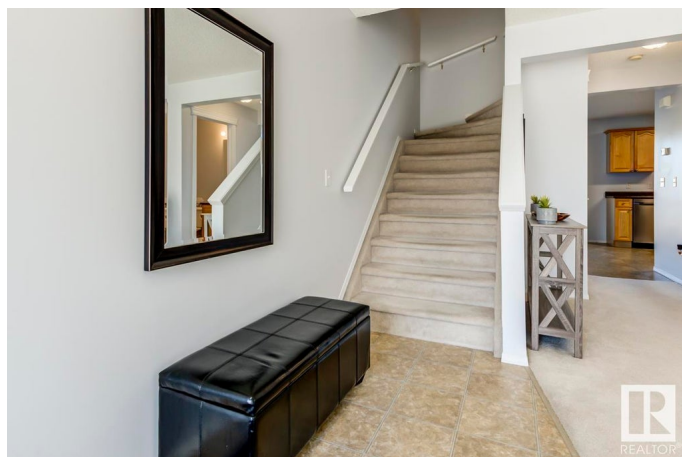
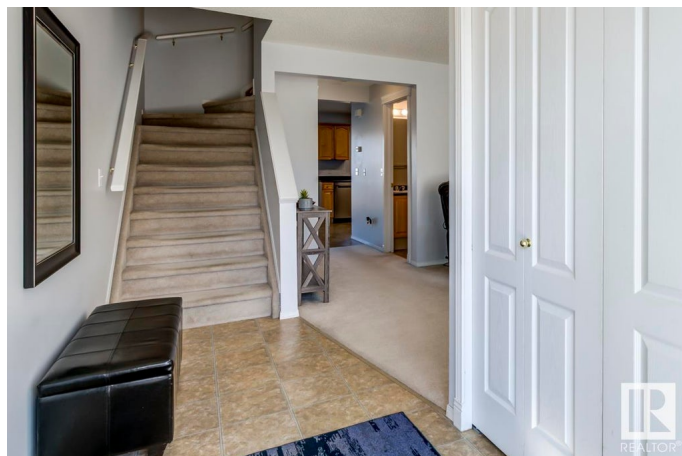
Silver Berry, Edmonton, AB

A great 3-bedroom, 2.5 bath unit ideally located in Silver Berry. Bright and generous family room. Huge kitchen with plenty of counterspace and storage and room for a dinette, walk-in pantry. A Patio door leading to a newer 8x10 deck. Main floor half bath. Upstairs you will find the primary suite is massive with large bright windows, walk-in closet and a 3 piece ensuite. 2 additional bedrooms and a 4 piece bath. Unfinished basement with newer full-sized washer/dryer, newer hot water tank. 2 parking stalls right out front. 2 pets per unit, dogs under <24" at shoulder. Low condo fee of \$310.23. Easy access to Whitemud or Henday. Many shops and restaurants nearby. Not a lot of turn over in this complex-because owners love it there.

Built in 2004

Essential Information

MLS® #	E4432171
Price	\$285,000
Bedrooms	3
Bathrooms	2.50
Full Baths	2
Half Baths	1
Square Footage	1,408
Acres	0.00



Year Built	2004
Type	Condo / Townhouse
Sub-Type	Townhouse
Style	2 Storey
Status	Active

Community Information

Address	75 3380 28a Avenue
Area	Edmonton
Subdivision	Silver Berry
City	Edmonton
County	ALBERTA
Province	AB
Postal Code	T6T 1V4

Amenities

Amenities	Deck
Parking	2 Outdoor Stalls, See Remarks

Interior

Interior Features	ensuite bathroom
Appliances	Dishwasher-Built-In, Dryer, Microwave Hood Fan, Refrigerator, Stove-Electric, Washer, Window Coverings
Heating	Forced Air-1, Natural Gas
Stories	2
Has Basement	Yes
Basement	Full, Unfinished

Exterior

Exterior	Wood, Vinyl
Exterior Features	Fenced, Flat Site, Landscaped, Public Transportation, Schools, Shopping Nearby
Roof	Asphalt Shingles
Construction	Wood, Vinyl
Foundation	Concrete Perimeter

Additional Information

Date Listed	April 23rd, 2025
Days on Market	16

Zoning	Zone 30
Condo Fee	\$310

DATA IS DEEMED RELIABLE BUT IS NOT GUARANTEED ACCURATE BY THE REALTORS® ASSOCIATION OF EDMONTON. COPYRIGHT 2025 BY THE REALTORS® ASSOCIATION OF EDMONTON. ALL RIGHTS RESERVED. Trademarks are owned or controlled by the Canadian Real Estate Association (CREA) and identify real estate professionals who are members of CREA (REALTOR®, REALTORS®) and/or the quality of services they provide (MLS®, Multiple Listing Service®)

Listing information last updated on May 9th, 2025 at 6:32pm MDT