

# \$624,900 - 1542 Grant Way, Edmonton

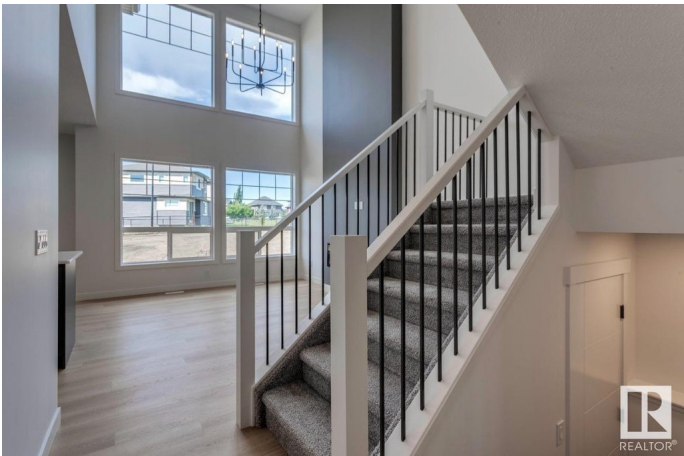
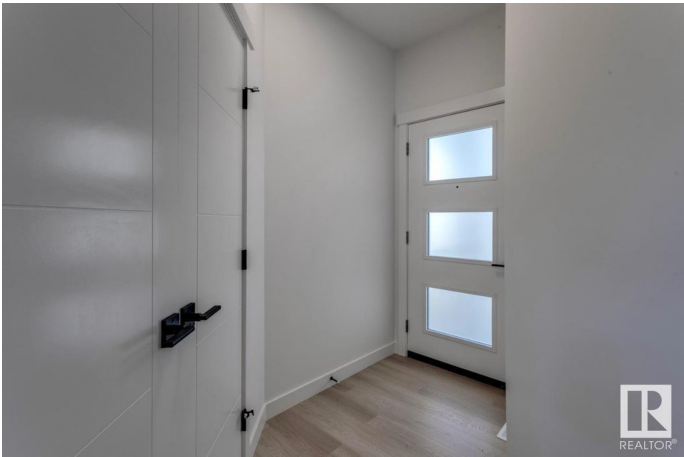
MLS® #E4428061

## \$624,900

4 Bedroom, 3.00 Bathroom, 1,881 sqft  
Single Family on 0.00 Acres

Glastonbury, Edmonton, AB

This Craftsman-style home features a main floor bedroom and full bathroom, along with an expansive mudroom that offers convenient access to both the laundry and a walk-through pantry. The generous dining nook is perfect for casual meals, while the kitchen boasts a substantial island with a flush eating bar. The great room is a standout with a 60" electric fireplace and soaring open-to-below ceilings. In the primary bedroom, you'll find an impressive 4-piece ensuite complete with a chic glass shower. The basement is designed with 9' ceilings and two large windows, adding to the home's airy, spacious feel.



Built in 2025

## Essential Information

MLS® #	E4428061
Price	\$624,900
Bedrooms	4
Bathrooms	3.00
Full Baths	3
Square Footage	1,881
Acres	0.00
Year Built	2025
Type	Single Family
Sub-Type	Detached Single Family
Style	2 Storey

Status                      Active

**Community Information**

Address                    1542 Grant Way  
Area                        Edmonton  
Subdivision                Glastonbury  
City                         Edmonton  
County                      ALBERTA  
Province                    AB  
Postal Code                T5T 0W2

**Amenities**

Amenities                 No Animal Home, No Smoking Home  
Parking Spaces            4  
Parking                    Double Garage Attached

**Interior**

Interior Features        ensuite bathroom  
Appliances                Hood Fan, Oven-Microwave  
Heating                    Forced Air-1, Natural Gas  
Fireplace                  Yes  
Fireplaces                 Insert  
Stories                     2  
Has Basement             Yes  
Basement                  Full, Unfinished

**Exterior**

Exterior                    Wood, Vinyl  
Exterior Features        Backs   Onto   Park/Trees,   Park/Reserve,   Playground   Nearby,   Public  
                                 Transportation, Schools, Shopping Nearby  
Roof                         Asphalt Shingles  
Construction              Wood, Vinyl  
Foundation                Concrete Perimeter

**Additional Information**

Date Listed                March 28th, 2025  
Days on Market            154  
Zoning                      Zone 58  
HOA Fees                   120

HOA Fees Freq.     Annually

DATA IS DEEMED RELIABLE BUT IS NOT GUARANTEED ACCURATE BY THE REALTORS® ASSOCIATION OF EDMONTON. COPYRIGHT 2025 BY THE REALTORS® ASSOCIATION OF EDMONTON. ALL RIGHTS RESERVED.Trademarks are owned or controlled by the Canadian Real Estate Association (CREA) and identify real estate professionals who are members of CREA (REALTOR®, REALTORS®) and/or the quality of services they provide (MLS®, Multiple Listing Service®)

Listing information last updated on August 29th, 2025 at 1:32pm MDT